

PART OF SEC. 32 & 33, T.7N., R.1W., S.L.B. & M.  
SCOTTSDALE ESTATES P.R.U.D.

IN NORTH OGDEN CITY

TAXING UNIT: 10

SCALE 1" = 50'

SEE PAGE 198

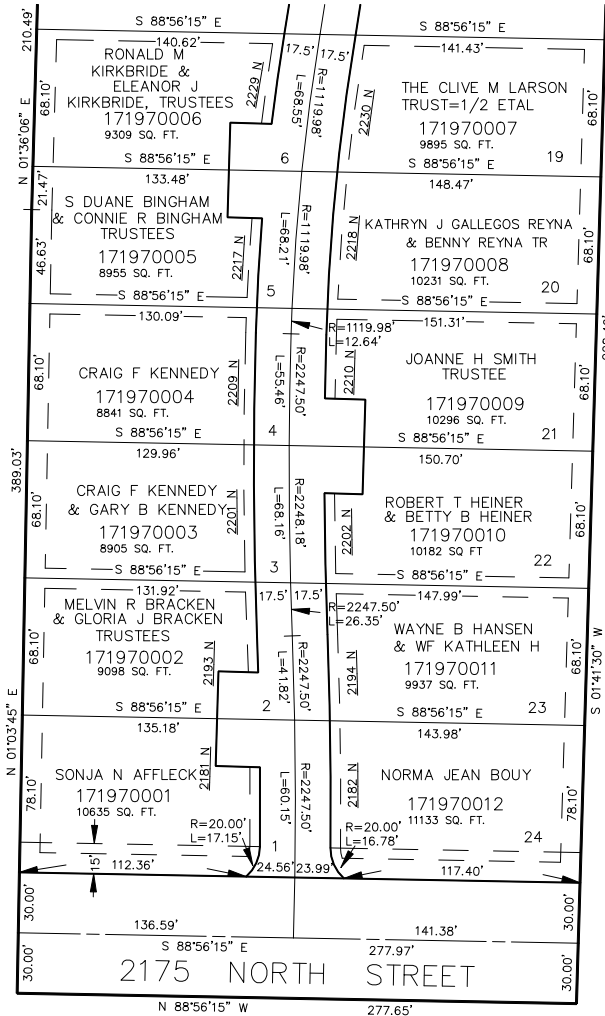
500 EAST STREET  
(Private Street)

SEE PAGE 69

SEE PAGE 70

SEE PAGE 76-1

SEE PAGE 76-1



ALL PROPERTY LINES ARE MEASURED TO THE STREET CENTER EXCEPT AS OTHERWISE SHOWN.

10' UTILITY & DRAINAGE EASEMENTS EACH SIDE OF PROPERTY LINES AS INDICATED BY DASHED LINES EXCEPT AS OTHERWISE SHOWN.

FOR COMPLETE ENG DATA SEE ORIGINAL DEDICATION PLAT IN BOOK 39, PAGE 2 OF RECORDS.